

# NEWSLETTER

18 September 2020

## This week at Fair Furlong



Please can you remind yourselves of the most important symptoms of coronavirus. A runny nose is not listed as a symptom to be concerned about. We understand that these are difficult times and information can be confusing. This is the official guidance from Public Health:

### Symptoms

The most important symptoms of coronavirus (COVID-19) are recent onset of any of the following:

- a new continuous cough
- a high temperature
- a loss of, or change in, your normal sense of taste or smell (anosmia)

For most people, COVID-19 will be a mild illness. However, if you have any of the symptoms above, stay at home and arrange to have a test to see if you have COVID-19 by ringing 119 or visiting <https://www.nhs.uk/conditions/coronavirus-covid-19/testing-and-tracing/get-a-test-to-check-if-you-have-coronavirus/>

While you are waiting for your test results for your child or anyone in your house you and the people that live with you must isolate in your homes and only leave if absolutely necessary.

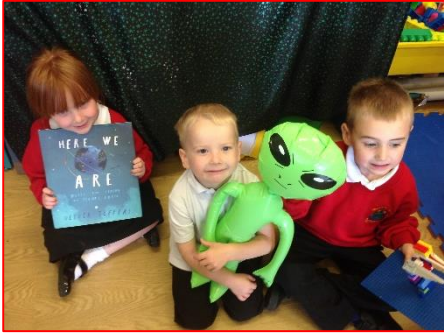
If your test results return a negative result you and your family can return to work & school.

### Certificates awarded for outstanding achievement this week

	Learning Together: Shayley Davis; Alexander Powell; Louis Marsh; Preeya Claridge; Kacey Molton
	Enthusiasm: Cory Hegarty; Reggie Coe; Aaliyah Viner
	Challenge: Stanley Forrest; Dalton Tucker; Jasmine Harris; Molly Powell; Karim Khoulal
	Respect: Brooke Delaney
	Trust: Tilly White; Brooke Delaney

## Our Learning This Week:

Seoul Class have blasted off into space and picked up an alien. They are helping the alien to learn all about the animals on planet Earth and how the animals survive. Seoul class have used their sounds to read and write the names of animals and label their different body parts. We have also been learning how to keep each other safe through: hand washing, giving each



other space and showing kindness to each other. In maths, Seoul Class have been practising counting to 20, representing numbers in different ways and grouping objects.

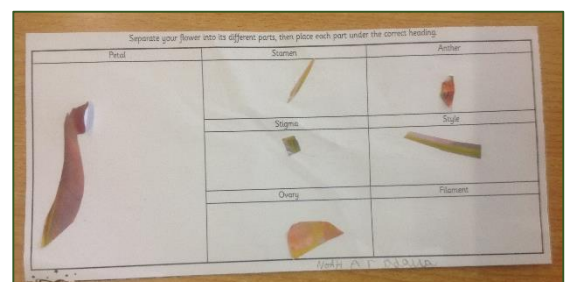
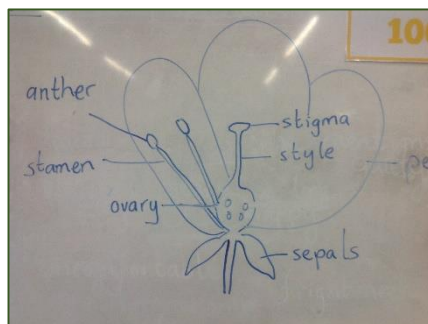


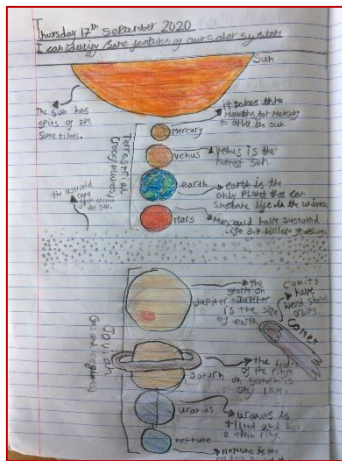
Reception have enjoyed exploring their environments as they settle into school. They are beginning to learn about woodland creatures and have used the clay to make their own creatures. This week they were introduced to the letter sounds *s*, *a*, *t* and *p*.



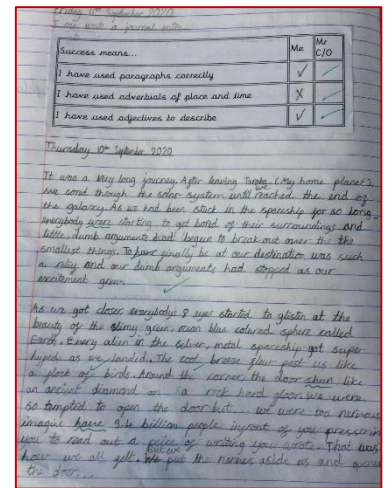
Last week, children in Year 3 learned about using oil pastels to create bold, bright colours and contrasted this with creating a watercolour wash of pale colours for the backgrounds.

We have also been learning about the anatomy of plants and flowers, watched a real flower being dissected and then dissected our own paper versions in pairs.





In Year 5 we have begun our space topic. This is Molly Powell and Lacie Perryman's work. Children have written a journal of an alien arriving on Earth and have drawn the solar system.



### Anti Flu nasal spray

Children from YR upwards should have brought home an envelope last week with a letter inviting them to have an anti flu nasal spray, which will be administered by the school nurse team in school. Please complete the form and return to school as soon as possible. We will notify you of the date the nurses are visiting nearer the time.

## ASSEMBLY

Just a reminder that you can now watch Friday Celebration assemblies on the Fair Furlong Website.

### Attendance this week:

KS1 Position	Class	% Attendance	KS2 Position	Class	% Attendance
1st	Port Louis	96.7%	1st	Santiago	96.8%
2nd	Seoul	95.8	2nd	Sofia	96.2%
3rd	Doha	94.4%	3rd	Guatemala City	94.5%
4th	Tehran	94.1%	4th	Cardiff	91.6%
5th	UlaanBaatar	88.8%	5th	Stockholm	91%
6th	Funafuti	86.1%	6th	Edinburgh	90.6%
			7th	Beijing	90%
			8th	Conakry	90.3%
			9th	Ottawa	90.1%

Attendance	Comment
99% - 100%	Outstanding
97% - 98%	Excellent
95% - 96%	Great (School attendance target is 95%)
93% - 94%	Satisfactory
Less than 93%	Must do better





*Doha class enjoyed their attendance lunch after having the best attendance last week. Well done!*

## Letters home

*Bedminster Down School Open Evening Letter*

### Menu for week beginning 21<sup>st</sup> September 2020

Monday : Cheese & Tomato Pizza

Tuesday : School Packed Lunch

Wednesday : School Packed Lunch

Thursday : School Packed Lunch

Friday : Fish Fingers & Chips or Quorn Dippers

## Diary Dates

### Term 1:

Monday 21 <sup>st</sup> September	Meet the Teacher Y6 (online event) - 5.30 - 6.00
Tuesday 22 <sup>nd</sup> September	Meet the Teacher Y5 (online event) - 5.30 - 6.00
Wednesday 23 <sup>rd</sup> September	Meet the Teacher Y4 (online event) - 5.30 - 6.00
Monday 24 <sup>th</sup> September	Meet the Teacher Y1 (online event) - 5.30 - 6.00
Monday 28 <sup>th</sup> September	Harvest Festival Donations (To be confirmed)
Monday 5 <sup>th</sup> October	Nursery start full hours
Friday 9 <sup>th</sup> October	Harvest Festival
Tuesday 20 <sup>th</sup> October	Parents Evening (via Zoom)
Wednesday 21 <sup>st</sup> October	Parents Evening (via Zoom)
Wednesday 21 <sup>st</sup> October	Photographer - individual photos
Thursday 22 <sup>nd</sup> October	Christmas Card competition launch
<u>Friday 23<sup>rd</sup> October</u>	<u>END OF TERM 1 - INSET DAY SCHOOL CLOSED TO PUPILS</u>

### Term 2

Monday 2<sup>nd</sup> November INSET DAY - START OF TERM 2 SCHOOL CLOSED TO PUPILS

Tues 3 <sup>rd</sup> - 6 <sup>th</sup> November	Anti Bullying / Equalities week
Monday 9 <sup>th</sup> November	New Family meetings all week (online/phone)
Monday 9 <sup>th</sup> November	New Theme WOW days

Tuesday 10 <sup>th</sup> November	Christmas card competition deadline
Monday 30 <sup>th</sup> November	Christmas Panto Y1-6
Monday 30 <sup>th</sup> November	Christmas decoration making
Tuesday 1 <sup>st</sup> December	Dragonbird Theatre - YR and YN
Wednesday 2 <sup>nd</sup> December	Dragonbird Theatre - YR and YN
Monday 7 <sup>th</sup> December	Christmas Story Day / Window Wonderland
Monday 7 <sup>th</sup> December	Choir singing for Murford (via Zoom)
Tuesday 8 <sup>th</sup> December	Phase 1 Class Nativities - all week
Tuesday 15 <sup>th</sup> December	KS2 Christmas Carols / Online bedtime stories
Wednesday 16 <sup>th</sup> December	Christmas Lunch
Thursday 17 <sup>th</sup> December	Class parties
Friday 18 <sup>th</sup> December	END OF TERM

## RECEPTION ADMISSION APPLICATIONS 2021

Parents with children in Nursery must make an application for Reception in September 2021 **by midnight on 15<sup>th</sup> January 2021**. Please apply at: [www.bristol.gov.uk/schooladmissions](http://www.bristol.gov.uk/schooladmissions)

If you have any questions or problems with your application please ring the school office and we can arrange for you to come into school to help.

## YEAR 6 APPLICATIONS TO SECONDARY SCHOOL SEPTEMBER 2021

The national submission date for on-time applications for a Year 7 Secondary School place for Sept 2021 is

**Midnight on 31<sup>st</sup> October 2020** and this is when the on-line system will close. Please apply at: [www.bristol.gov.uk/schooladmissions](http://www.bristol.gov.uk/schooladmissions)

If you have any questions or problems with your application please ring the school office and we can arrange for you to come into school to help.



Message for Year 6 Parents/Carers re St. Mary Redcliffe Open Event

**St Mary Redcliffe and Temple School Virtual Open Evening Information**

This year our Open Evening will be 'virtual'. We have made three films that parents/carers of children in year 6 can watch to help them get a flavour of our school to help them make a decision. Here is a link to the films on our website.

<https://www.smrt.bristol.sch.uk/index.php/admissions>

## 2020/21 School Dates

### Term 1

Thursday 3 September to Thursday 22 October

(Tuesday 1 September, Wednesday 2 September and Friday 23 October : INSET DAYS)

### Term 2

Tuesday 3 November to Friday 18 December

(Monday 2 November : INSET DAY)

### Term 3

Tuesday 5 January to Friday 12 February

(Monday 4 January : INSET DAY)

### Term 4

Monday 22 February to Thursday 1 April

### Term 5

Monday 19 April to Friday 28 May

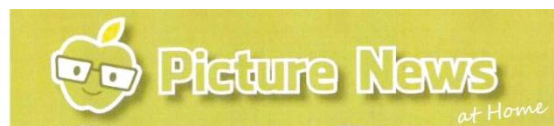
### Term 6

Monday 7 June to Wednesday 21 July

(Thursday 8<sup>th</sup> and Friday 9 July : INSET DAY)

<https://www.gov.uk/government/publications/covid-19-stay-at-home-guidance/stay-at-home-guidance-for-people-with-confirmed-or-possible-coronavirus-covid-19-infection>

**If you or your family are affected by symptoms of Covid 19 please do let the school office know so we can respond accordingly in school. This is really important.**



21<sup>st</sup> September 2020  
What's going on this week?



A charity is seeking a review of the government guidance on care home visits. John's Campaign says many care homes in England are still refusing regular face-to-face visits, despite changes at the end of July that outlined new guidance for visitors.

Things to talk about at home...

Do you have any family or friends who live in a care setting?

Have you ever visited a care home or residential home? If so, what was it like?

Do you know anyone who works in a care home?

Could you find out about what life is like in a care home? Perhaps you could ask family or research online?

Please note any interesting thoughts or comments here...



Share your thoughts and read the opinions of others on our discussion board: [www.picture-news.co.uk/discuss](http://www.picture-news.co.uk/discuss)

Next Link - Domestic Abuse Helplines are open 10am - 4pm Monday to Friday.

If you are concerned about your safety and need help and support, please contact us and we can help. Help is also available 24 hours a day, 7 days a week on the national domestic helpline -

**FREEPHONE 0808 2000 247**

DATA PROTECTION REGULATION - You may not be aware but the General Data Protection Regulation (GDPR) came into force in May 2018. We are required to conduct due diligence for all parents to be aware of the regulation and how it affects their child and the way the school deals with their personal data. Under the regulation we have a responsibility to ensure to the best of our ability that any personal data held is up to date. We would ask that should any of your personal data change i.e. telephone number, address, medical needs etc that you please inform the school as soon as possible so we can update our records. You will still receive an annual data collection sheet every September but we would ask you not to wait but inform the school of any changes immediately