

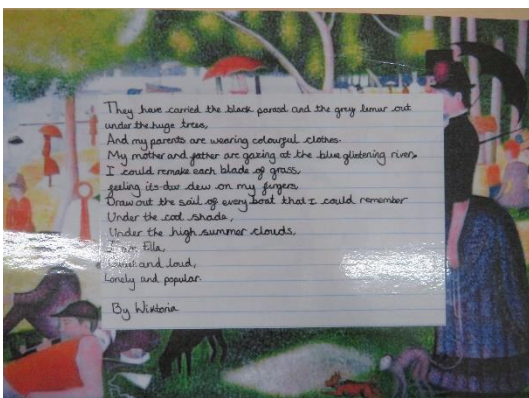
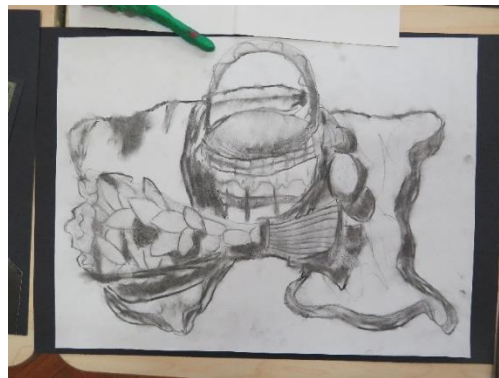
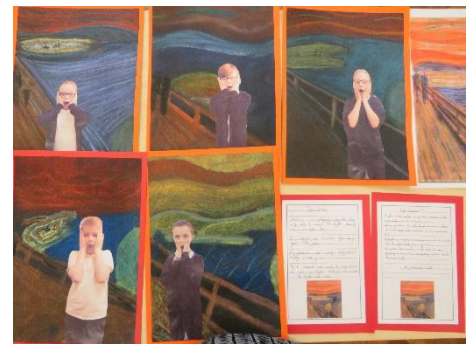
# NEWSLETTER

17 January 2020

## This week at Fair Furlong



*Art exhibition* - On Monday we had an exhibition of the children's work from Art Week to share with the school. Here are just some of the outstanding pieces of art that were produced throughout last week.





**Y3 to Caerleon-** This week Y3 have had a very wet but wonderful trip to Caerleon. They got to try on Roman armour and saw ancient Roman artifacts and pretended to be visiting a Roman doctor, some children even had their legs cut off!



**Chimpanzee Wessex Water** - As an introduction to our Term 3 topic, High and Lows, Chimpanzee Class visited Weston-Super-Mare water treatment centre. We were guided around the treatment centre and learnt about how water is dealt with once the toilet has been flushed. It was a fascinating trip, and if you wish to know



what you can and can't put down the toilet, just ask a member of Chimpanzee Class!

**Y6 Polar Explorer Day** - To introduce the Year 6's Explorer topic this term they had a visit from a real polar explorer - Anthony Jinman! They had a fantastic day with Anthony, carrying out experiments on how blubber protects animals from the cold and how glaciers form. Additionally the children had been following



Anthony on his most recent expedition to the Antarctica! He was carrying out research with a team of scientists on colonies



of penguins that have been moving round the coast in search of safe nesting ground. While Anthony was on his expedition he took a flag with Fair Furlong's logo on. The children were over the moon that



Anthony had taken the Fair Furlong flag to the bottom to the bottom of the world!!! Look out for the flag around the school in the coming weeks!

*Fish Finger Thursday - Thank you to everyone that had a school dinner on Thursday. The children are always happy to see Kelly Ketchup and Finn*



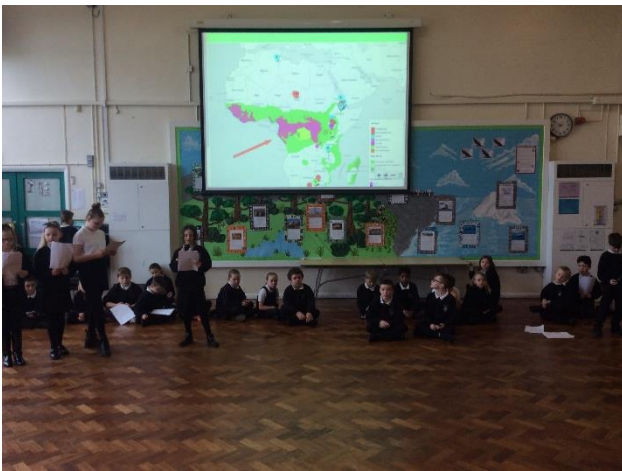
*Fishfinger on census day*

*handing out the small prizes. There were a total of 379 children that had a fish finger*

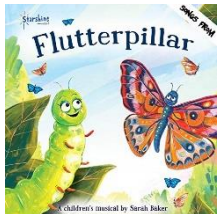
*dinner!*



*If you think you are entitled to free school meals please pop into the school office where they will be happy to advise you.*



*Chimpanzee class assembly - Chimpanzee Class Assembly is all about chimpanzees and their relationship to humans. Charles Darwin, Jane Goodall and David Attenborough helped us explain the links between humans and chimps and the future of chimps on this planet.*



*Next term Years 2&3 will be performing 'Flutterpillar'. The morning performance will be Tuesday 25<sup>th</sup> March and the evening performance Wednesday 25<sup>th</sup>. Times and ticket availability will be confirmed at a later date.*

*A little caterpillar wishes she could flutter about like a butterfly. She tries fluttering her legs but that just makes the animals laugh, telling her she'll never be a butterfly because she's got no wings! Trying to be kind, they say perhaps she's a "flutterpillar," although of course there is no such thing.*

### **Menu for the week beginning 20 January 2020 - Week 1:**

**Monday: Cheese & Tomato Pizza : Bean & Potato Wrap : Salad Bar**

**Tuesday: Roast Gammon & Gravy : Veggie Pizza Hot Dog**

**Wednesday: Cottage Pie & Gravy : Mac 'N' Cheese : Salad Bar**

**Thursday: Roast Chicken, Roast Pots & Gravy : Sweetcorn Tortilla Pie**

**Friday: Fish Fingers & Chips : Quorn Dippers : Salad Bar**








AWARDS: Golden Good Manners Table: Cameron Lewis; Lily Watts; Lexi Mai Pumford; Faye Baker; Willow Bryant Lunchtime Legends: Polar Bear and Shark classes



Cubs

Out of School Achievements: Cooper Bryant for being invested into

Certificates awarded for outstanding achievement this week:

	Learning Together: Samuel Bennett; Faye Baker; Learning Together
	Enthusiasm: Ivy-Marie Vincente Banes; Vinny Neale; Aaron calder; Ellie-Mae Gill
	Challenge: Chinelo Watkins; Hollie Young; Thomas Martin; Sophia Higginson; Ella Steadman
	Respect: Mason Swatton
	Trust: Reggie Coe

Attendance this week

KS1 Position	Class	% Attendance	KS2 Position	Class	% Attendance
1 <sup>st</sup>	Sea Turtle	98.7%	1 <sup>st</sup>	Shark	99%
2 <sup>nd</sup>	Fossa	98%	2 <sup>nd</sup>	Cheetah	98.9%
3 <sup>rd</sup>	Seal	97.3%	3 <sup>rd</sup>	Tiger	97.9%
4 <sup>th</sup>	Polar Bear	96.4%	4 <sup>th</sup>	Orangutan	97.3%
5 <sup>th</sup>	Dugong	95.9%	5 <sup>th</sup>	Silky Sifaka	95%
6 <sup>th</sup>	Umbrellabird	89.3%	5 <sup>th</sup>	Silverback Gorilla	95%
			7 <sup>th</sup>	Chimpanzee	94%
			8 <sup>th</sup>	Black Rhino	93.7%
			9 <sup>th</sup>	Snow Leopard	92.1%

Attendance	Comment
99% - 100%	Outstanding
97% - 98%	Excellent
95% - 96%	Great (School attendance target is 95%)
93% - 94%	Satisfactory
Less than 93%	Must do better

### Kitchen Assistant Wanted

Would you like to be a part of our busy catering team?

Can you commit every Monday - Friday 11.30-2pm?

If you are interested please either ring on 0117 3772181 or pop into the school office.

### 2019/20 School Dates

Term 3

Tuesday 7 January - Friday 14 February 2020 (Monday 6 January - INSET DAY)

Term 4

Monday 24 February to Friday 3 April 2020

Term 5

Monday 20 April to Friday 22 May 2020

Term 6

Monday 1 June to Friday 17 July 2020 (Monday 20 July - INSET DAY)



Letters home this week .... None

### **Dates for your Diary:**

Term 3

Mon 20<sup>th</sup>

Chinese New Year day

Fri 24<sup>th</sup>

Seal class assembly

Wed 29<sup>th</sup>

**NO AFTER SCHOOL CLUBS**

Fri 31<sup>st</sup>

Sea Turtle assembly

Tues 4<sup>th</sup> February

E-Safety Day

Fri 7<sup>th</sup> Feb

Fossa class assembly

Fri 14<sup>th</sup> Feb

End of Term 3

**Term 4**

Mon 24<sup>th</sup>

All children back to school

Thurs 5<sup>th</sup> March

World Book Day

Mon 9<sup>th</sup>

Maths Day

Tues 10<sup>th</sup>

Parents Evening 4-7

Wed 11<sup>th</sup>

Parents Evening 4-6

Tues 24

Phase 2 Performance - AM - tbc

Wed 25<sup>th</sup>

Phase 2 Performance - PM - tbc - **No After School Clubs**

Wed 1<sup>st</sup> - 3<sup>rd</sup> April

Year 3 Camp

Wed 1<sup>st</sup>

EYFS Easter Bonnet Parade

**Term 5**

Mon 11<sup>th</sup>-14<sup>th</sup> May

Y6 SATS

Wed 20<sup>th</sup>

New Reception Parents Meeting

**Term 6**

Mon 1<sup>st</sup> June

All children back to school

Mon 29<sup>th</sup> - 3<sup>rd</sup> July

Healthy & Safe Week

Mon 29<sup>th</sup>

Life Skills

Tues 30<sup>th</sup>

Phase 3 Sports Morning

Wed 1<sup>st</sup> July

Phase 1 Sports Morning

Tues 2<sup>nd</sup>

Phase 2 Sports Morning

Fri 3<sup>rd</sup>

Open Day

Tues 14<sup>th</sup>

Phase 3 Performance - AM - tbc

Wed 15<sup>th</sup>

Phase 3 Performance - PM - tbc - **No After School Clubs**

Fri 17<sup>th</sup>

Family Picnic

Fri 17<sup>th</sup>

**LAST DAY OF TERM 6 - NO AFTER SCHOOL CLUBS**

We will not tolerate behaviour that is:

- ☒ thre@tening,
- ☒ abusive or
- ☒ violent

# NO EXCUSE FOR ABUSE

We strive to create a safe and secure environment for pupils and staff alike. And we will take action when necessary.

**NAHT** [www.naht.org.uk](http://www.naht.org.uk)

## Picture News at Home

20<sup>th</sup> January 2020  
What's going on this week?



Facebook has announced a new policy banning all artificial intelligence (AI) created videos that are likely to mislead viewers into thinking someone said words that they didn't actually say. The new policy will mean that all videos that have been edited in ways that are likely to mislead someone into thinking that a person in a video said words that they didn't really say, or, if people or objects are placed onto a video, making them appear to be real, will be removed from both Facebook and Instagram (which is owned by Facebook).

Things to talk about at home...

- ☒ Do you think there are some websites you can trust more than others (e.g. news websites or social media platforms)?
- ☒ Do you think Facebook have made the right decision to remove videos that they know are fake?
- ☒ Do you think it will be difficult to tell if the videos are real or fake?

Fair Furlong invite you to...  
**Reading Café**

Where: The small hall  
When: Every Tuesday, 8:15am

Like last year, we are inviting you to join us at our very own 'Reading Café'. This year, it will be open to ALL families from any phase every Tuesday morning.

We will provide the books, blankets, tea (or coffee) and toast! Just bring yourselves. We look forward to seeing you all there.



The Matthew Tree Project - 10 Filwood Broadway, Knowle, Bristol BS4 1JN 0117 966 8071 <http://www.the-matthew-tree-project.org/contactus.html>

Who is this service for? People and families at crisis point. What services do they offer? Crisis support advice and guidance Healthy food for the whole family (for duration of period of need) Nutrition and dietary advice Cook Smart Eat Well course (home cooking from scratch on a budget) Outreach support care (Befriending & Mentoring) Navigation (easy access to other external partner services) Money Smart Work Wise (budgeting and money management) Banquet Club & Meal Share (for the over 55's). Please speak with either Mrs Charlton or Mrs Brace our Family Link Workers if require a referral to this agency.

DATA PROTECTION REGULATION - You may not be aware but the General Data Protection Regulation (GDPR) comes into force in May 2018. As part of our preparations we are conducting due diligence for all parents to be aware of the new regulation and how it affects their child and the way the school deals with their personal data. Under the new regulation we have a responsibility to ensure to the best of our ability that any personal data held is up to date. We would ask that should any of your personal data change i.e. telephone number, address, medical needs etc that you please inform the school as soon as possible so we can update our records. You will still receive an annual data collection sheet every September but we would ask you not to wait but inform the school of any changes immediately